

# Nuvoton VPN User Manual

Microsoft VPN for Windows XP

## (1) Install VPN

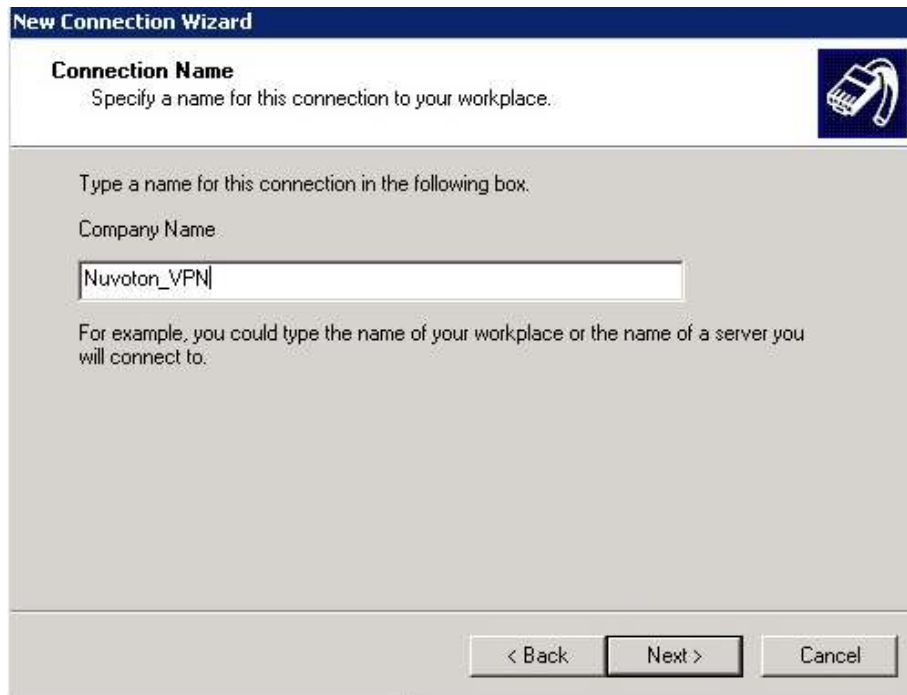
1. Open **"Start -->Control Panel "-->"Network Connections" -->"New Connection Wizard "**, then click **"Next"**.
2. Select **"Connect to the Network at my work place"**, then press **"Next"**.



3. Select "**Virtual Private Network Connection**", then click "**Next**".



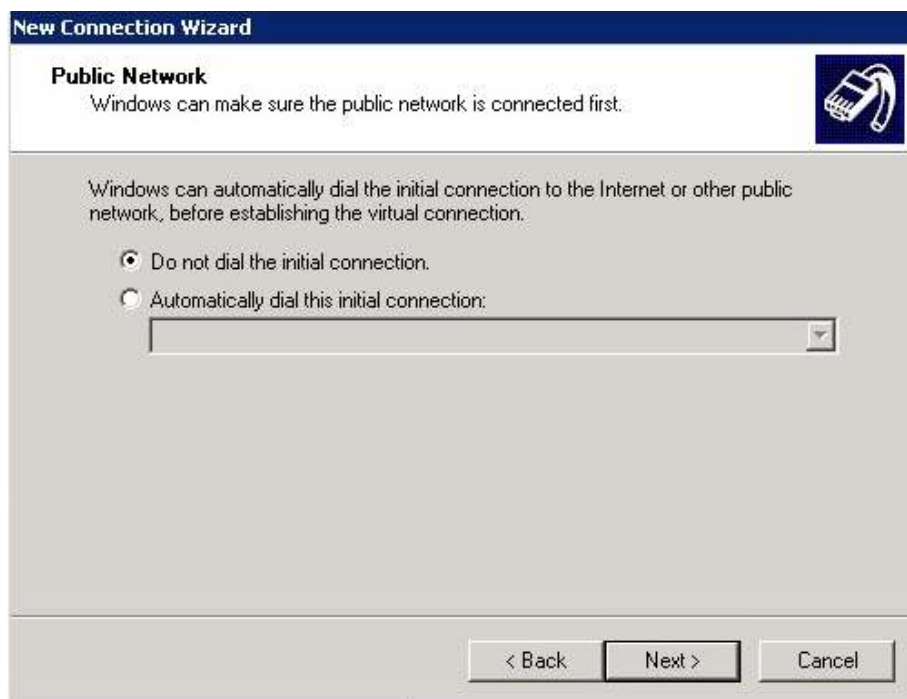
4. Please type "Nuvoton\_ VPN" (or other name you want) in Company Name field.  
Connection Name please type Nuvoton\_ VPN , then Click Next .



The screenshot shows the 'New Connection Wizard' window with the 'Connection Name' tab selected. The title bar reads 'New Connection Wizard'. Below the title bar, the tab is labeled 'Connection Name'. The main text says 'Specify a name for this connection to your workplace.' and 'Type a name for this connection in the following box.' There is a text input field labeled 'Company Name' containing the text 'Nuvoton\_VPN'. Below the input field, a note states: 'For example, you could type the name of your workplace or the name of a server you will connect to.' At the bottom right, there are three buttons: '< Back', 'Next >', and 'Cancel'. A small icon of a modem is in the top right corner.

PS. IF your computer have both modem and LAN card, there will be one more screen, please select

**“Do not dial the initial connection.”**



The screenshot shows the 'New Connection Wizard' window with the 'Public Network' tab selected. The title bar reads 'New Connection Wizard'. Below the title bar, the tab is labeled 'Public Network'. The main text says 'Windows can make sure the public network is connected first.' and 'Windows can automatically dial the initial connection to the Internet or other public network, before establishing the virtual connection.' There are two radio button options: 'Do not dial the initial connection.' (which is selected) and 'Automatically dial this initial connection:'. Below the second option is a dropdown menu. At the bottom right, there are three buttons: '< Back', 'Next >', and 'Cancel'. A small icon of a modem is in the top right corner.

5. In the "**Host name or IP address (such as microsoft.com or 157.54.0.1)**" box,

type assigned IP address **vpn.nuvoton.com** , click "Next".

**New Connection Wizard**

**VPN Server Selection**  
What is the name or address of the VPN server?

Type the host name or Internet Protocol (IP) address of the computer to which you are connecting.  
Host name or IP address (for example, microsoft.com or 157.54.0.1):

vpn.nuvoton.com

< Back   Next >   Cancel

6. Select create this connection for “**Anyone’s use**”, then go “**Next**”

**New Connection Wizard**

**Connection Availability**  
You can make the new connection available to any user or only to yourself.

A connection that is created for your use only is saved in your user account and is not available unless you are logged on.

Create this connection for:

☒ Anyone's use  
☐ My use only

< Back   Next >   Cancel

7. Check Add a shortcut to this connection to my desktop, then click “**Finish**”.



8. Now, popup "Connect Nuvoton\_VPN", Click "Properties"



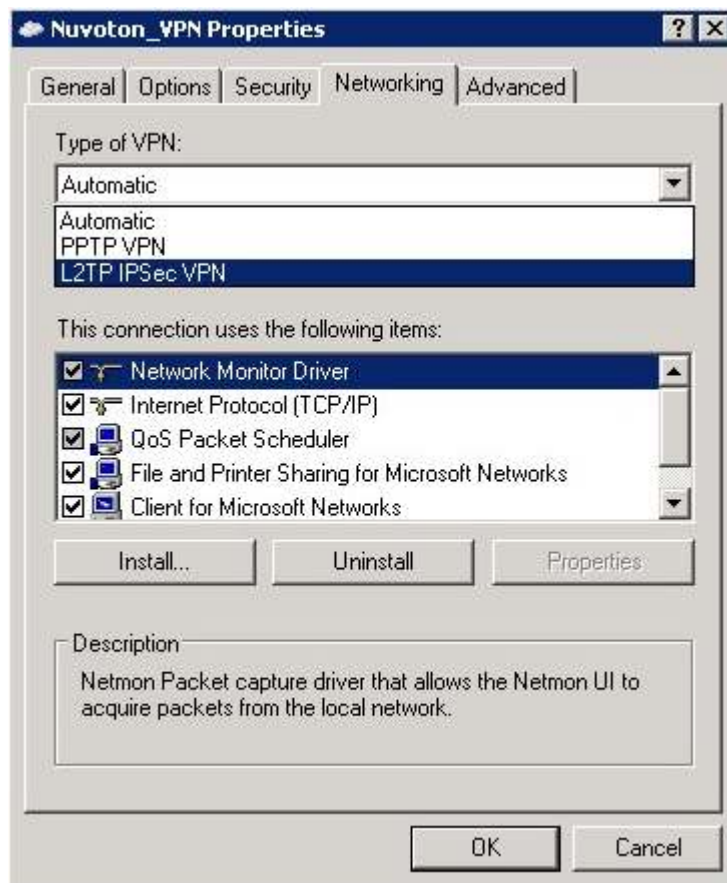
9. a. Select on "Security", and then click on "IPSec Settings"



b. Check "Use pre-shared key for authentication", fill out the pre-shared key "ntasavpn", click "OK"



c. Click "Networking", roll down the page to choose "L2TP IPSec VPN" on the Type of VPN item, and click "OK" to finish VPN setting.



10. If you are connecting to Internet directly, fill out your **OA account/password**, click "Connect", you can establish virtual private connection with Intranet, and can use some resources just like you are in office

