

Nuvoton VPN User Manual

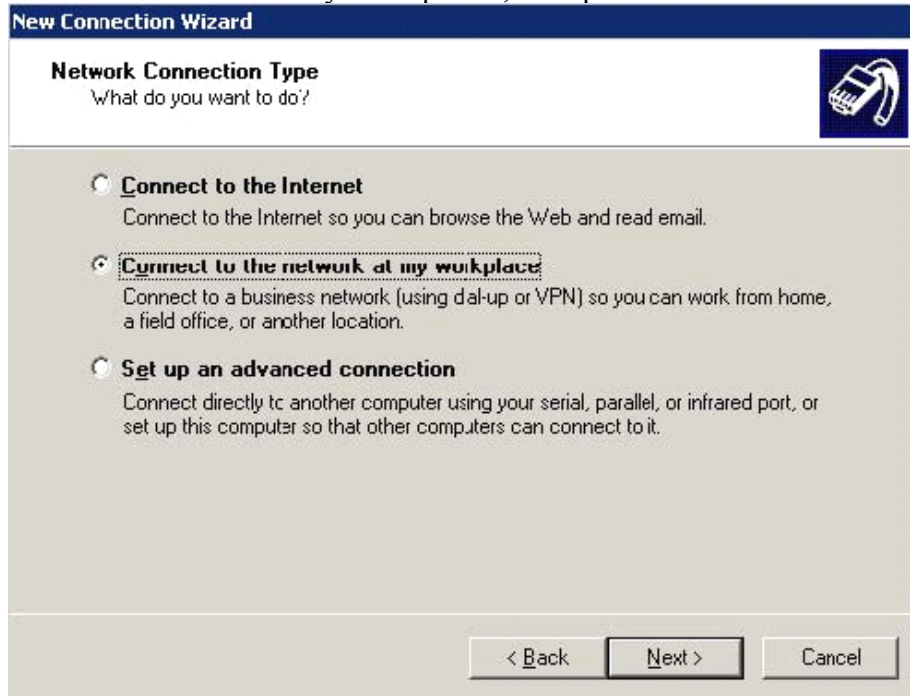
Microsoft VPN for Windows XP

Nuvoton Electronics Corp.

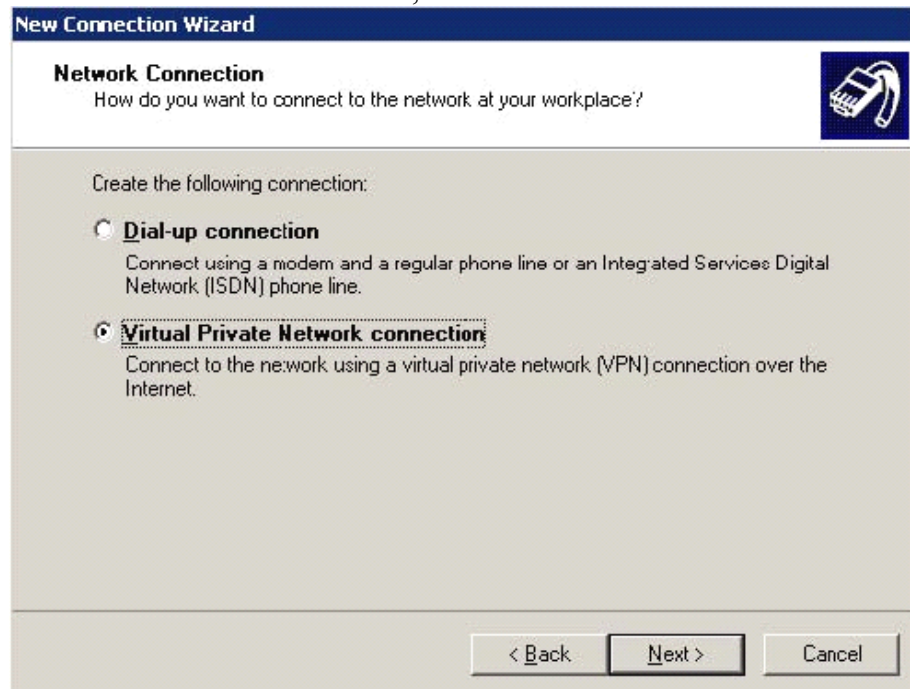
2008/10/9

(1) Install VPN

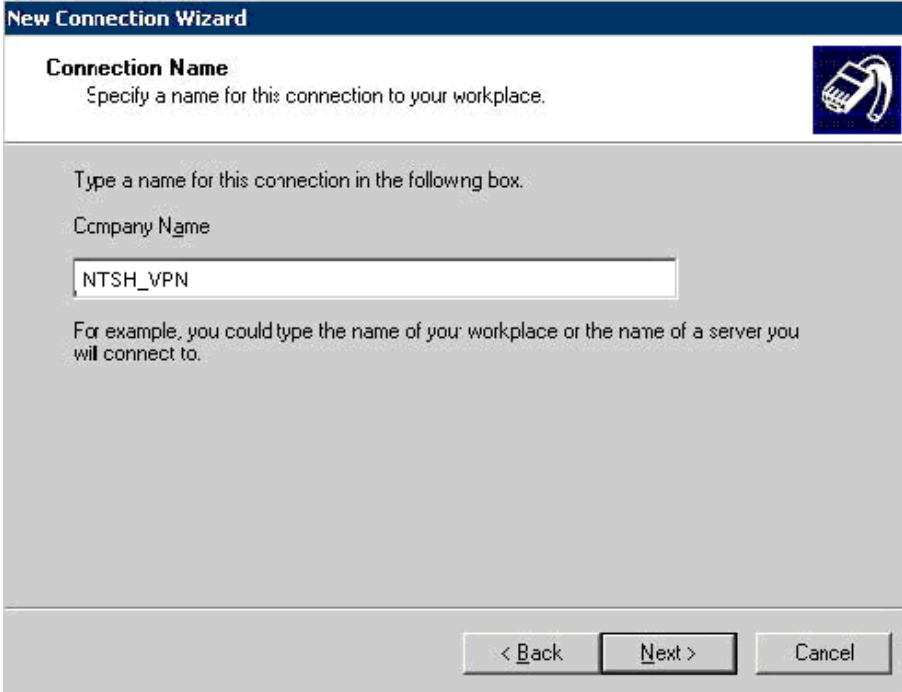
1. Open "Start -->Control Panel "-->"Network Connections" -->"New Connection Wizard ", then click "Next".
2. Select "Connect to the Network at my work place", then press "Next".



3. select "Virtual Private Network Connection", then click "Next".

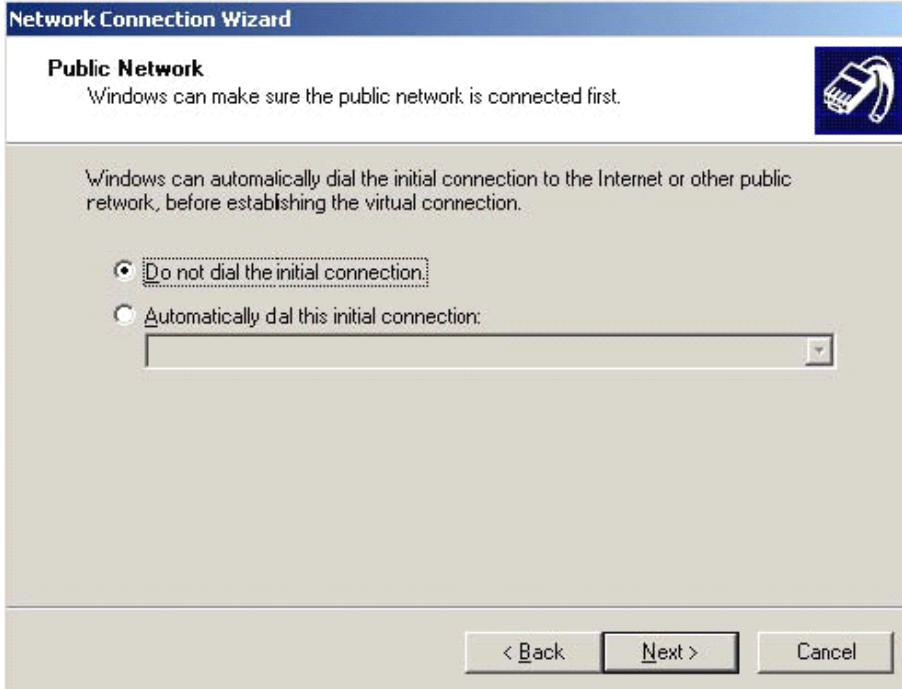


4. Please type "Nuvoton VPN" (or other name you want) in Company Name field.
Connection Name please type nuvoton VPN, then Click Next.



The image shows a Windows XP-style dialog box titled "New Connection Wizard". It has a blue header bar with the title. Below the header, there's a section titled "Connection Name" with a sub-instruction: "Specify a name for this connection to your workplace." To the right of this section is a small icon of a modem. The main area of the dialog is light gray and contains the text: "Type a name for this connection in the following box." followed by "Company Name". Below this is a text input field containing "NTSH_VPN". Further down, there's a note: "For example, you could type the name of your workplace or the name of a server you will connect to." At the bottom of the dialog, there are three buttons: "< Back", "Next >", and "Cancel".

PS. IF your computer have both modem and LAN card, there will be one more screen, please select "Do not dial the initial connection".

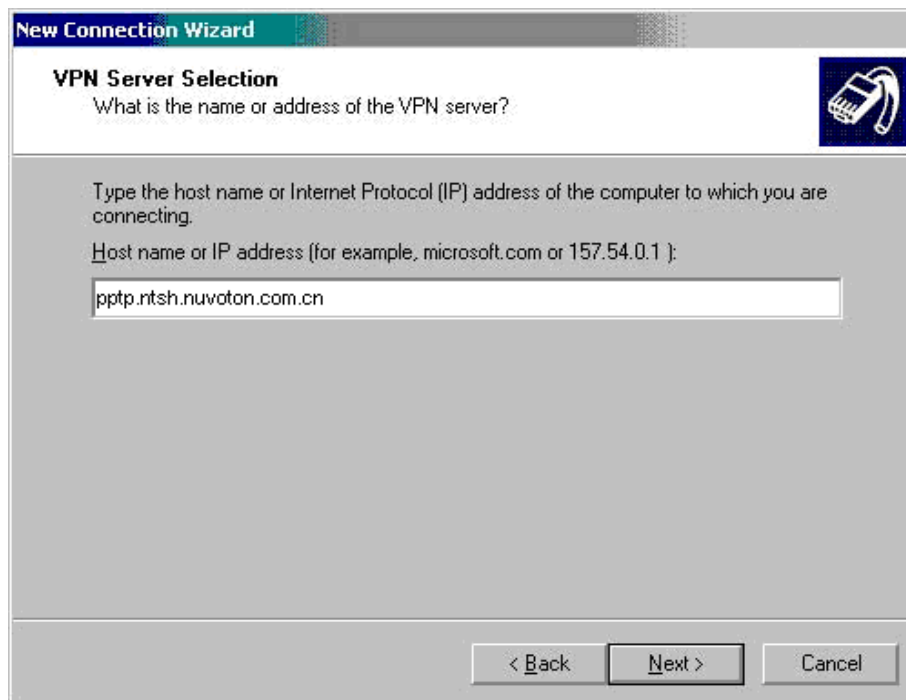


The image shows a Windows XP-style dialog box titled "Network Connection Wizard". It has a blue header bar with the title. Below the header, there's a section titled "Public Network" with a sub-instruction: "Windows can make sure the public network is connected first." To the right of this section is a small icon of a modem. The main area of the dialog is light gray and contains the text: "Windows can automatically dial the initial connection to the Internet or other public network, before establishing the virtual connection." Below this, there are two radio button options. The first option is selected and is labeled "Do not dial the initial connection:". The second option is labeled "Automatically dial this initial connection:" and has a dropdown menu next to it. At the bottom of the dialog, there are three buttons: "< Back", "Next >", and "Cancel".

5. In the "Host name or IP address (such as microsoft.com or 123.45.6.78)" box, type the assigned IP address below for NTSH VPN Server:

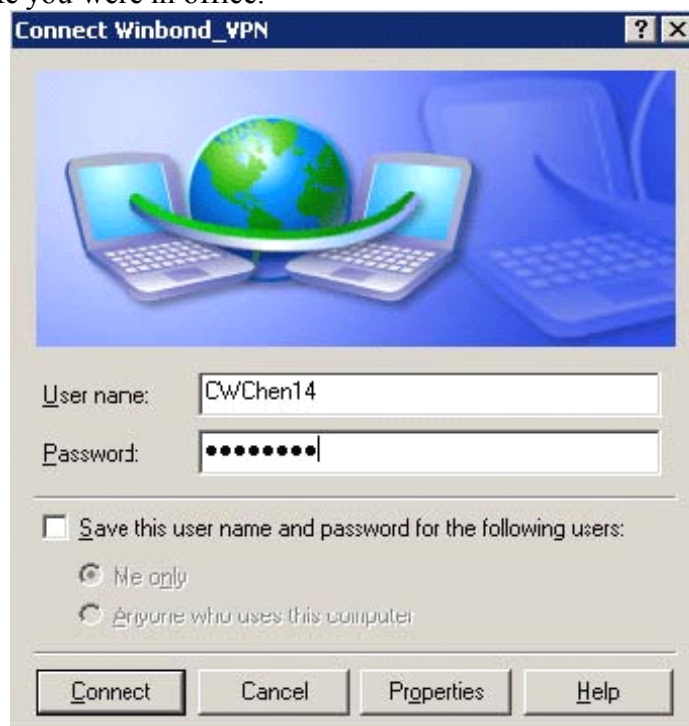
pptp.ntsh.nuvoton.com.cn 如遇故障請改用 **58.246.86.227**

click "Next".



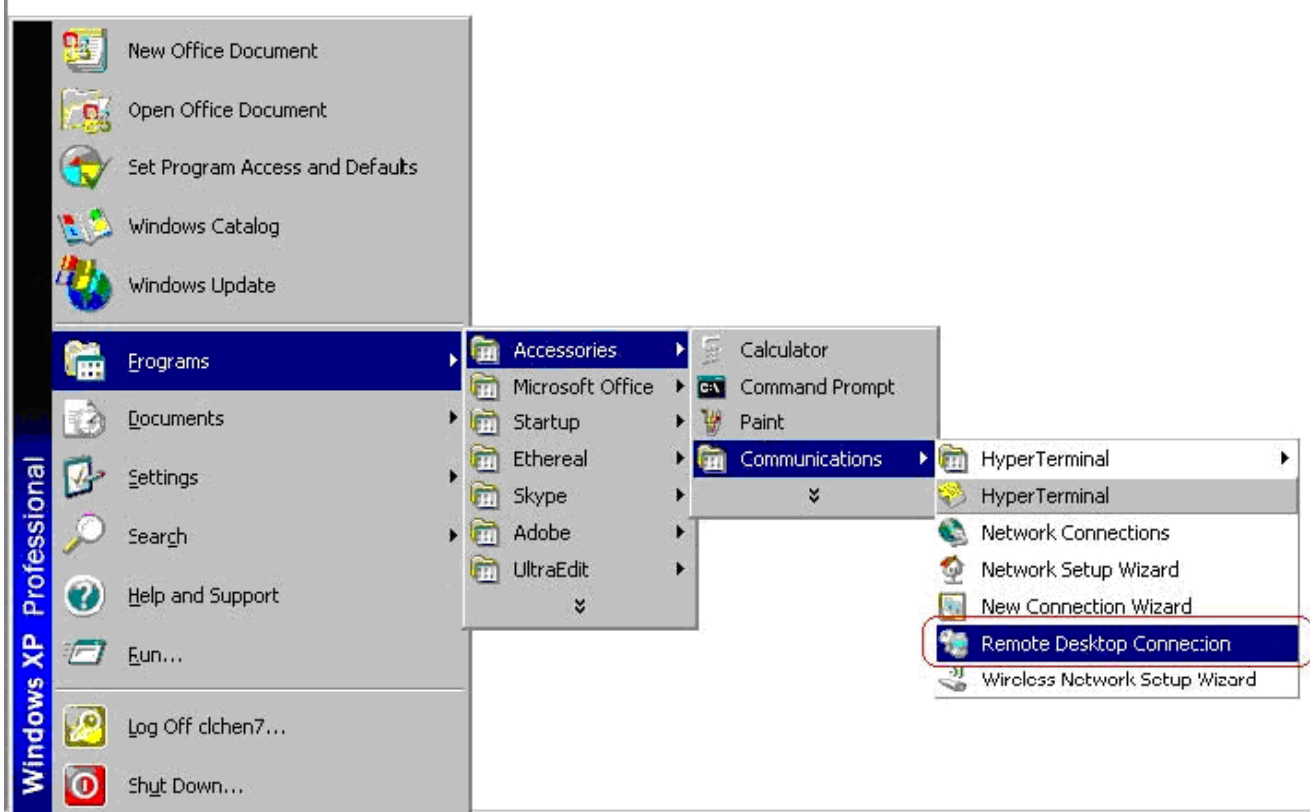
6. Click "Finish".

7. Now, popup "Connect Nuvoton VPN". If you are connecting to Internet directly, input your PCLAN ccount/password, click "Connect", you can establish virtual private connection with Intranet, and can use some resources just like you were in office.

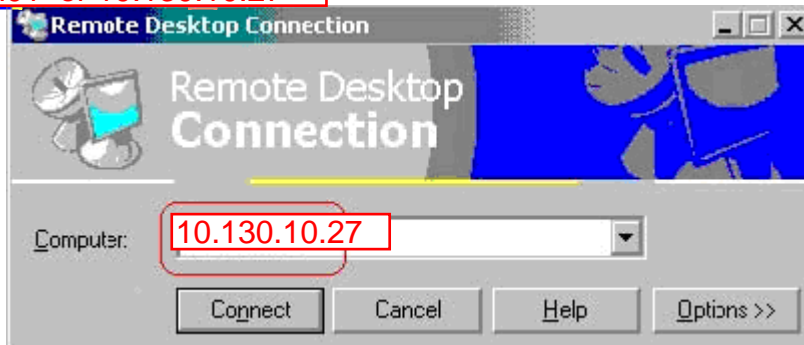


(2) Log in to Terminal Server

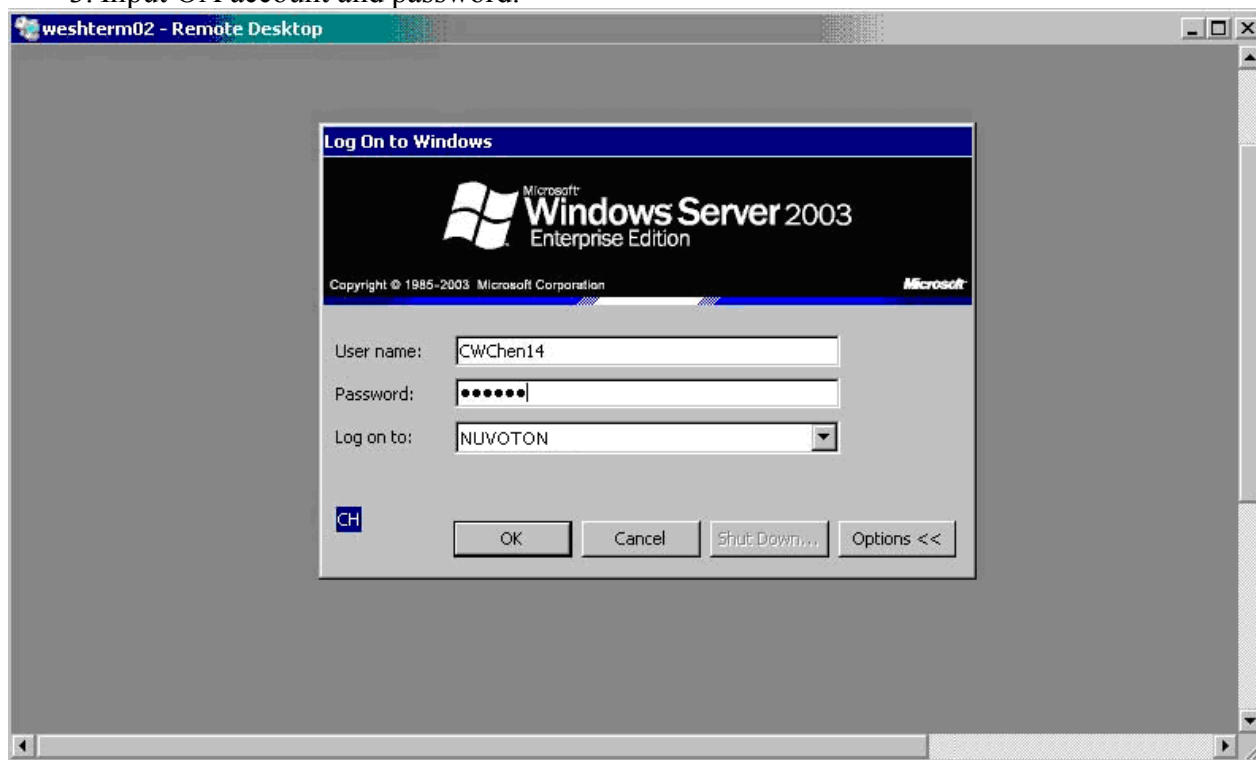
1. Open Programs -> Accessories -> Communications, Remote Desktop Connection.



2. Type: ntshterm01 or 10.130.10.27



3. Input OA account and password.



4. Please use 'Log off' command instead of directly close terminal server window when you want leave it.

