

NuEdu-SDK-NUC472 Quick Start

Overview

The NuEdu-SDK-NUC472, which consists of NuEdu-EVB-NUC472 and NuEdu-Basic01, is a development tool for Nuvoton's Cortex[®]-M4 based NUC472 series micro-controllers. The NuEdu-SDK-NUC472 provides users with useful and powerful learning materials for developing and verifying the application program.

Hardware Setup

● Hardware Introduction :



NuEdu-EVB-NUC472



NuEdu-Basic01

● Connection Description :

Plug the NuEdu_Basic01 into NuEdu-EVB-NUC472, and connect it to a USB port on the right side of computer, as shown below.



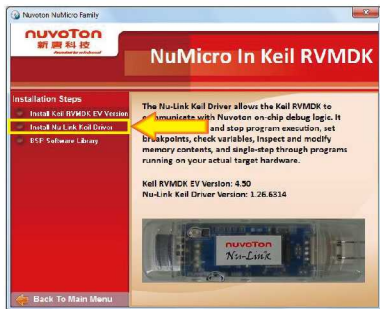
Software Setup

1. Put the disc in the box to your CD-ROM drive, open the disc, and then execute "autorun.exe".
2. In Main Menu, click "Keil RVMDK EV Version" in the left column to start installation.
3. Follow Installation Steps, click "Install Keil RVMDK EV Version" in the left column, and then follow tips to install Keil μ Vision[®] IDE.

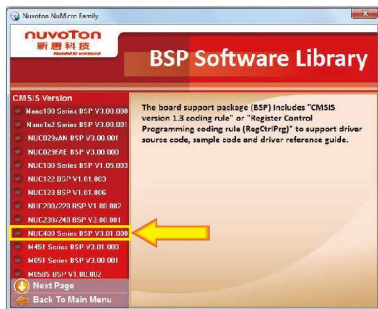


NuEdu-SDK-NUC472 Quick Start

- Click "Install Nu-Link Keil Driver", and follow tips to install the Nu-Link Driver.

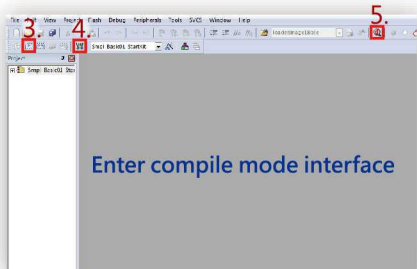


- Click "BSP Software Library", select "NUC400 Series BSP", and then follow tips to install the Board Support Package (BSP).

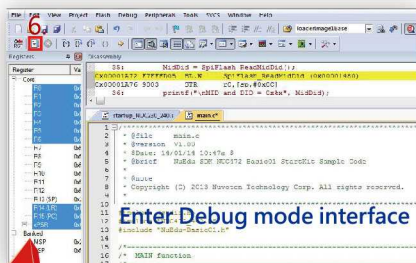


Open Smpl_Basic01_StartKit Project

- Open a project from the BSP installation folder (default as C:\Nuvoton) using the following path: `\\BSP_Library\NUC400SeriesBSP\CMSIS_Vx.xx.xxx\SampleCode\NuEdu\Basic01\Smpl_Basic01_StartKit\KEIL`
- Execute "Smpl_Basic01_StartKit.uvproj"



- Compile the program
- Download the program code to Flash
- Enter / Exit Debug mode



- Execute the program
- NuEdu-Basic01 shows sample results



To download NuEdu software and hardware files and get the latest information, please visit www.nuvoton.com/NuMicroSoftware