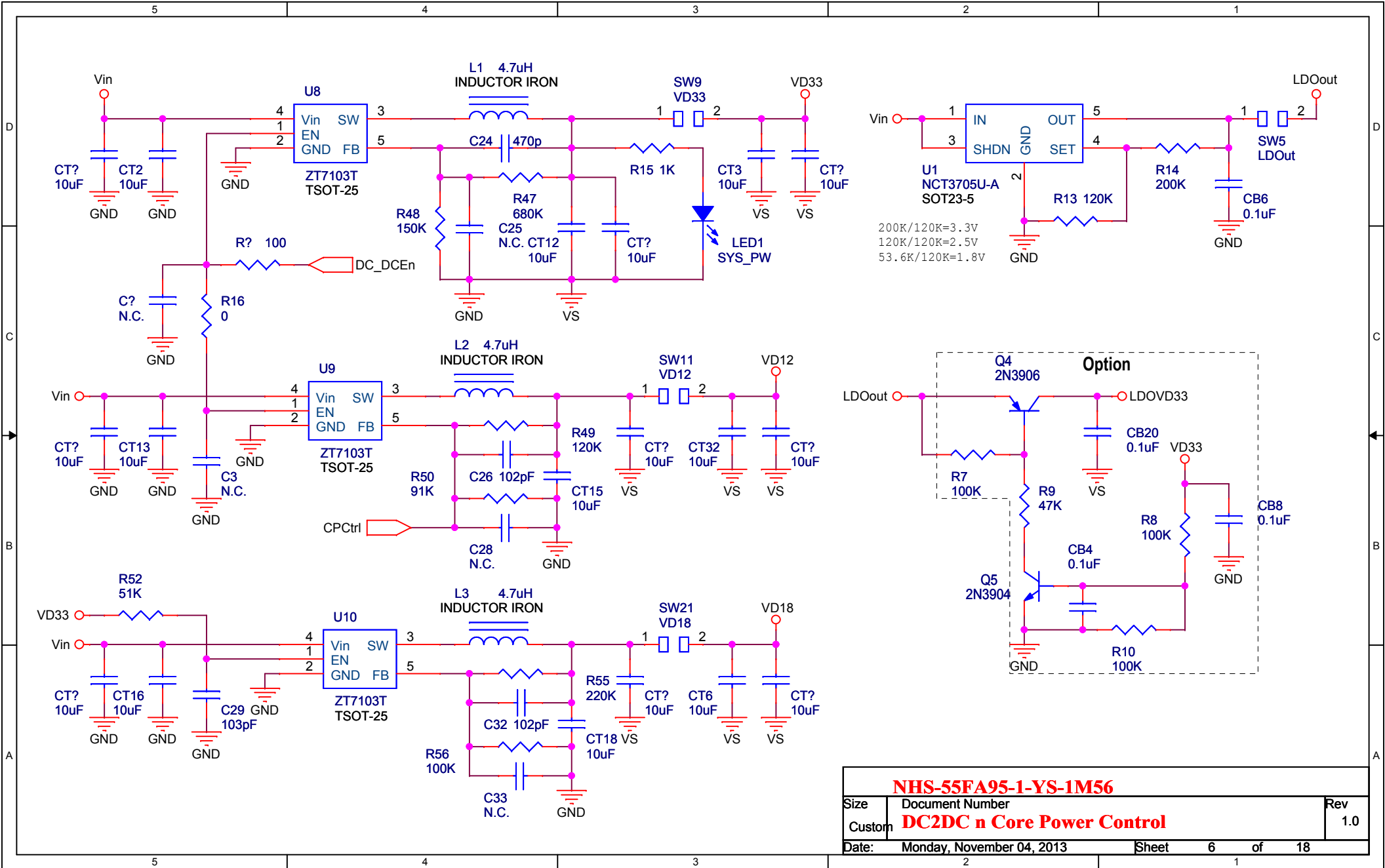


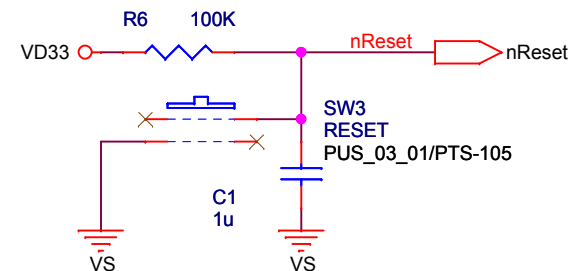
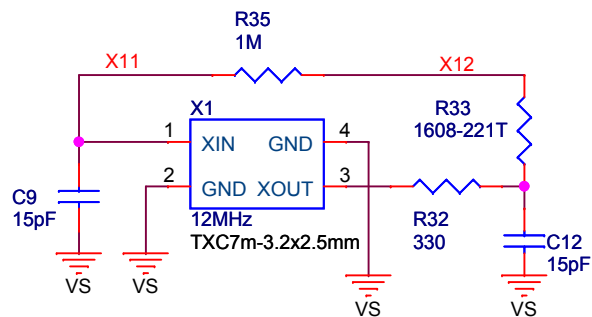
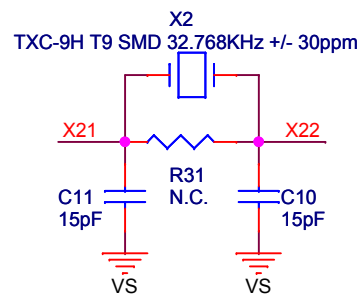
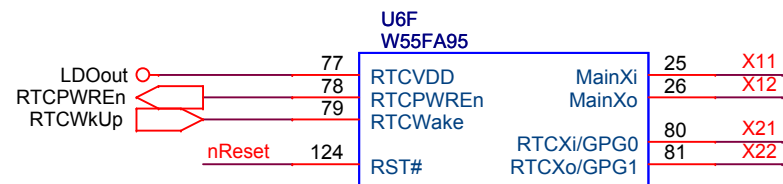
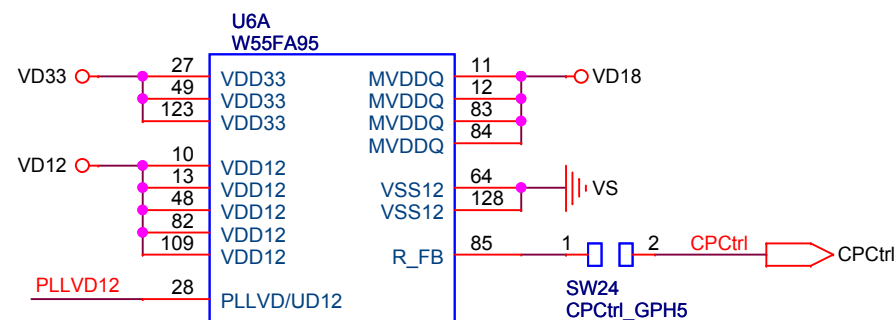
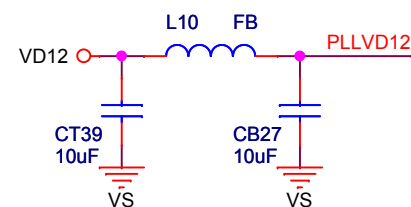
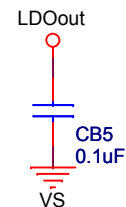
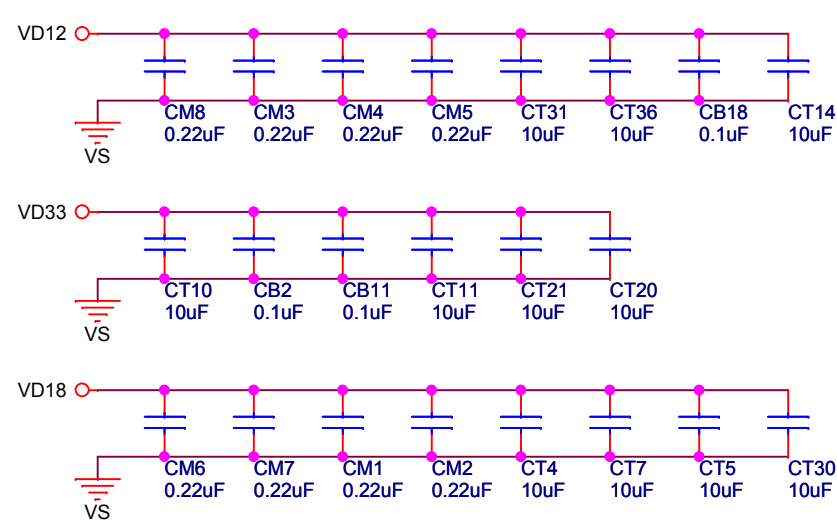
NHS-55FA95-1-YS-1M56

Size	Document Number	Rev
Custom	System Block Diagram	1.0
Date:	Monday, November 04, 2013	Sheet 1 of 18



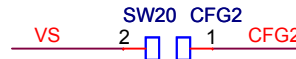
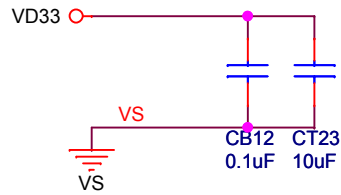
NHS-55FA95-1-YS-1M56

Size	Document Number	Rev
Custom	DC2DC n Core Power Control	1.0
Date:	Monday, November 04, 2013	Sheet 6 of 18

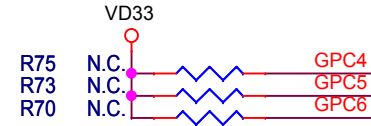
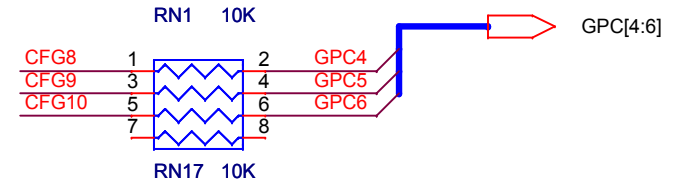
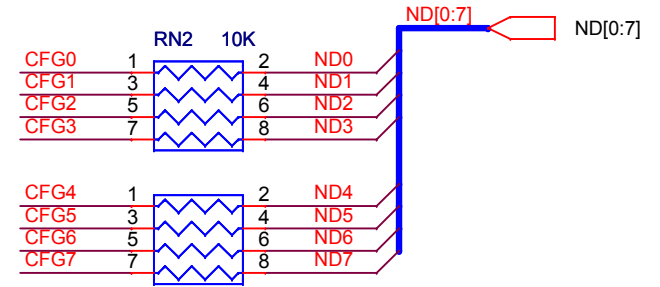


NHS-55FA95-1-YS-1M56

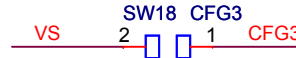
Size	Document Number	Rev
Custom	95SDN Crystal n Reset	1.0
Date:	Monday, November 04, 2013	Sheet 7 of 18



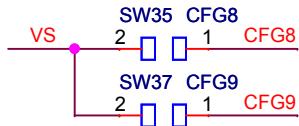
CFG2	Crystal
ON	27MHz
OFF	12MHz



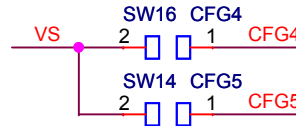
CFG7	NAND Cycle
ON	4
OFF	5



CFG3	Op. Mode
ON	Test
OFF	Operating



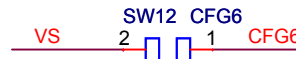
CFG9	CFG8	NAND Page Size
ON	ON	2KB
ON	OFF	4KB
OFF	ON	8KB
OFF	OFF	None



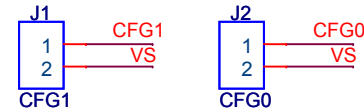
CFG5	CFG4	Description
ON	ON	SDR SDRAM
ON	OFF	Low Power DDR/SDRAM
OFF	ON	DDR/SDRAM
OFF	OFF	DDR2/SDRAM



CFG10	NAND Flash Type
ON	Error Free NAND Flash Memory.
OFF	Raw NAND Flash Memory.



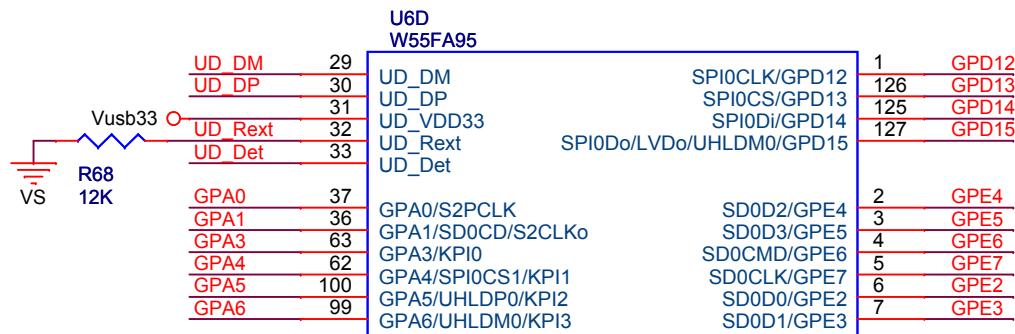
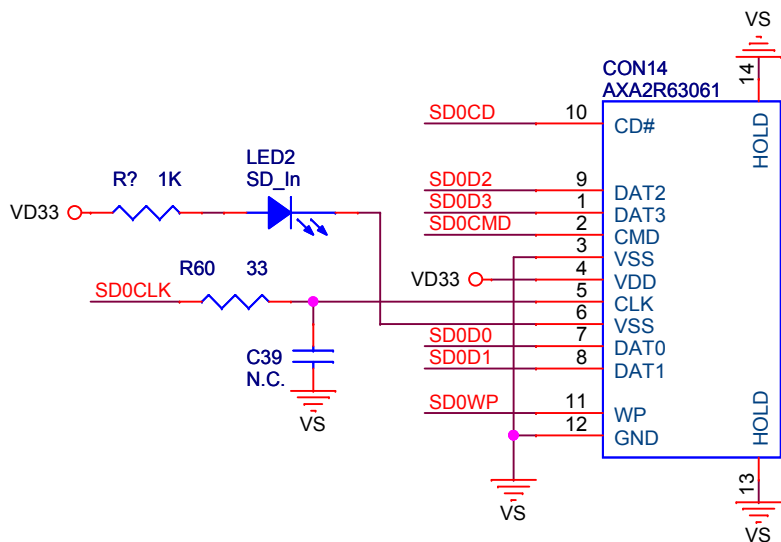
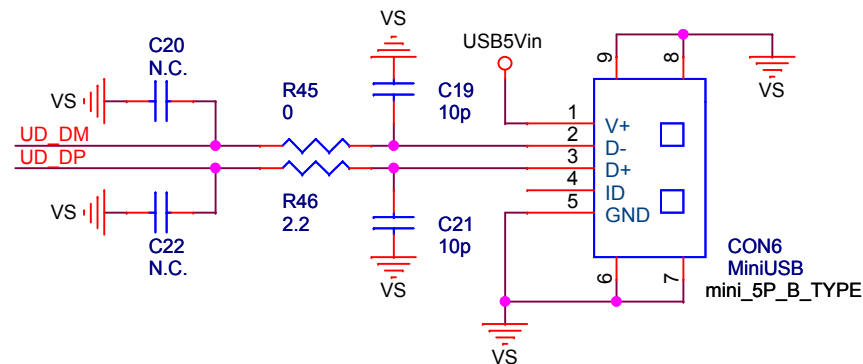
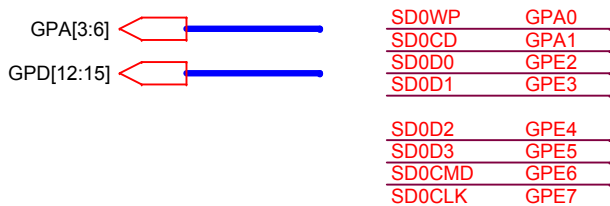
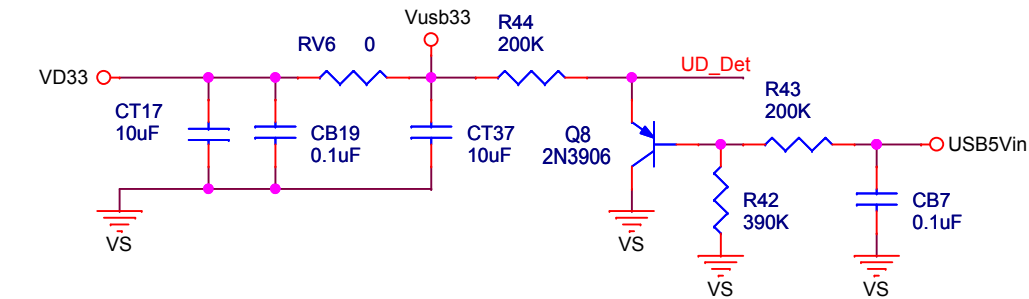
CFG6	System Clock
ON	Crystal Clock
OFF	PLL Clock



CFG1	CFG0	Note
ON	ON	Rec. DRAM = 66MHz.
ON	OFF	Nor. DRAM = 66MHz.
OFF	ON	Rec. DRAM = 132MHz.
OFF	OFF	Nor. DRAM = 132MHz.

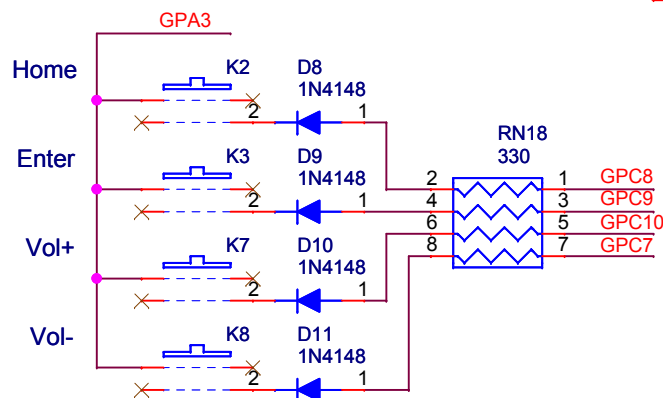
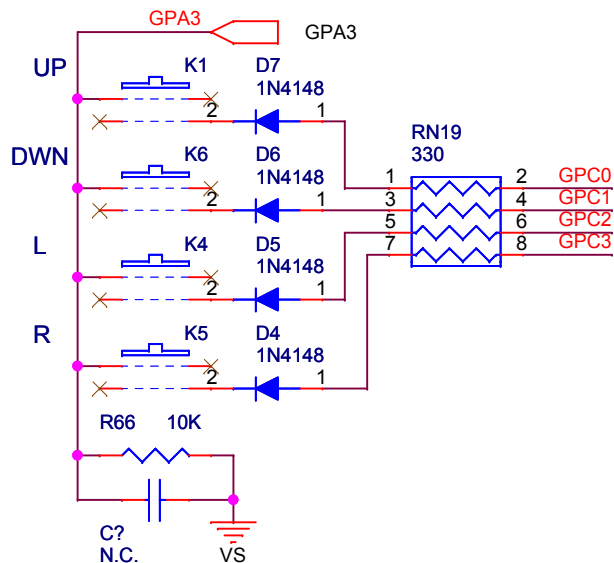
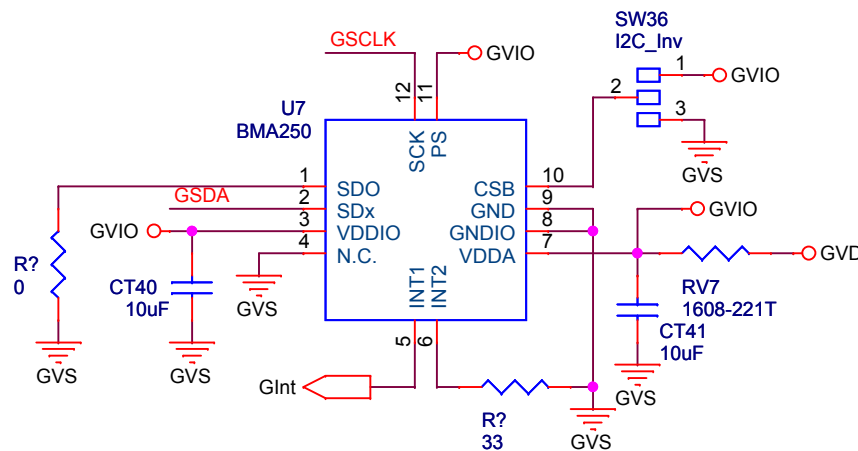
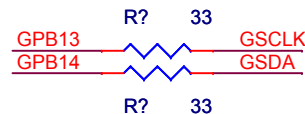
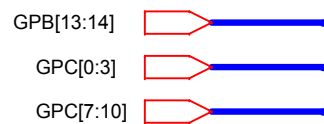
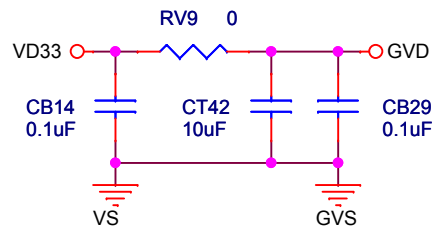
NHS-55FA95-1-YS-1M56

Size	Document Number	Rev
Custom	Power On Setting	1.0
Date:	Monday, November 04, 2013	Sheet 8 of 18



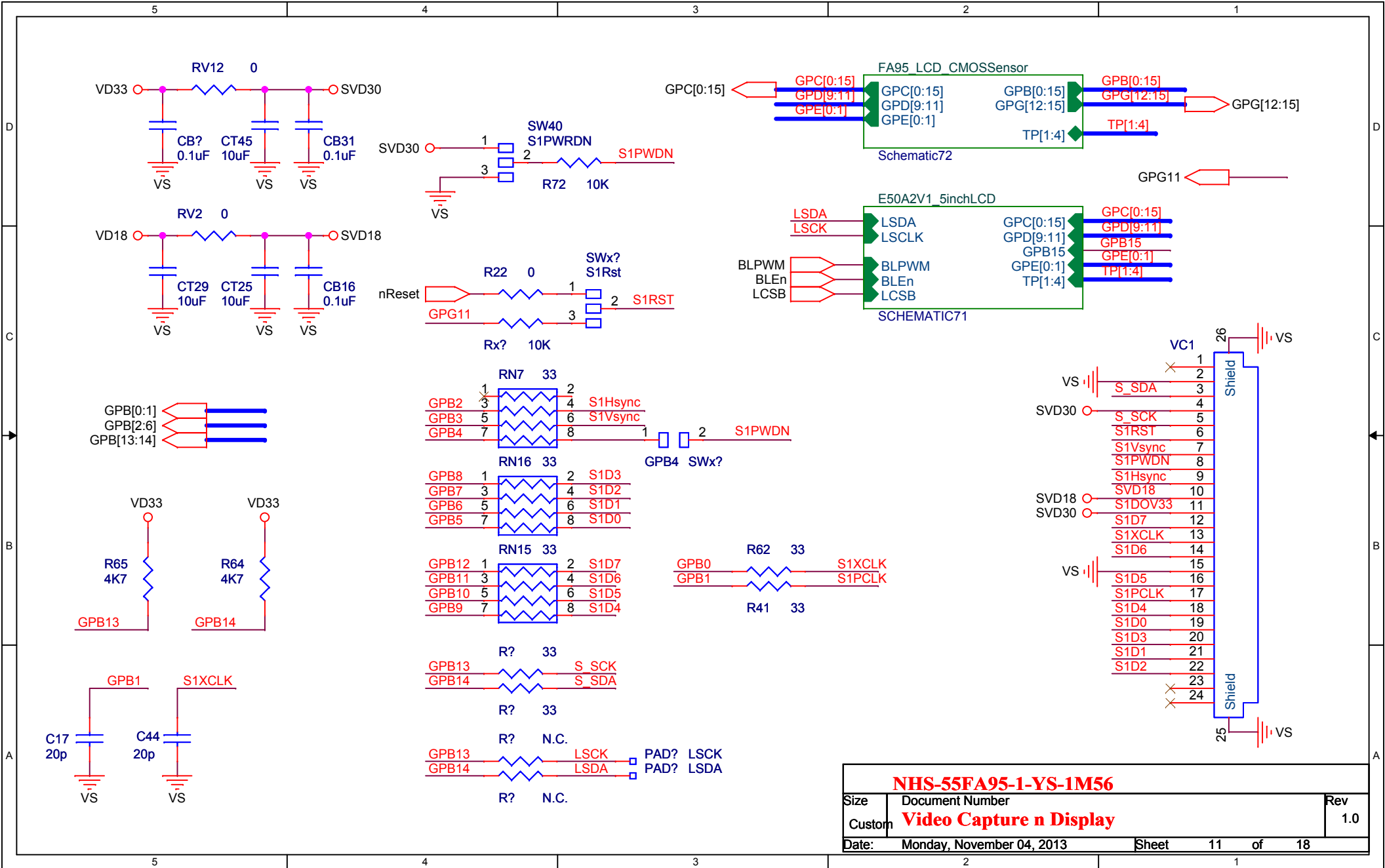
NHS-55FA95-1-YS-1M56

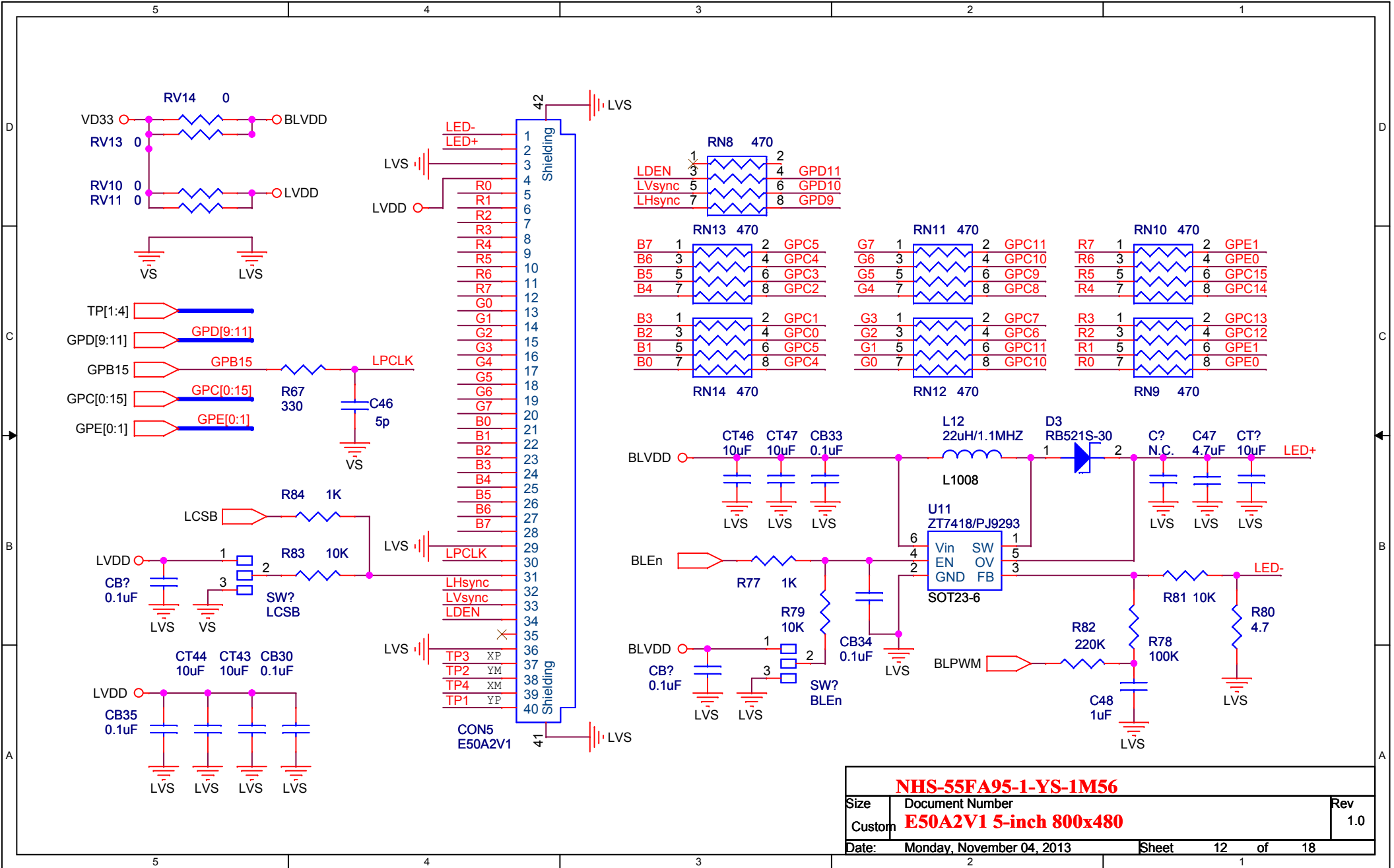
Size	Document Number	Rev
Custom	95SDN USB Device n SD Card0	1.0
Date:	Monday, November 04, 2013	Sheet 9 of 18

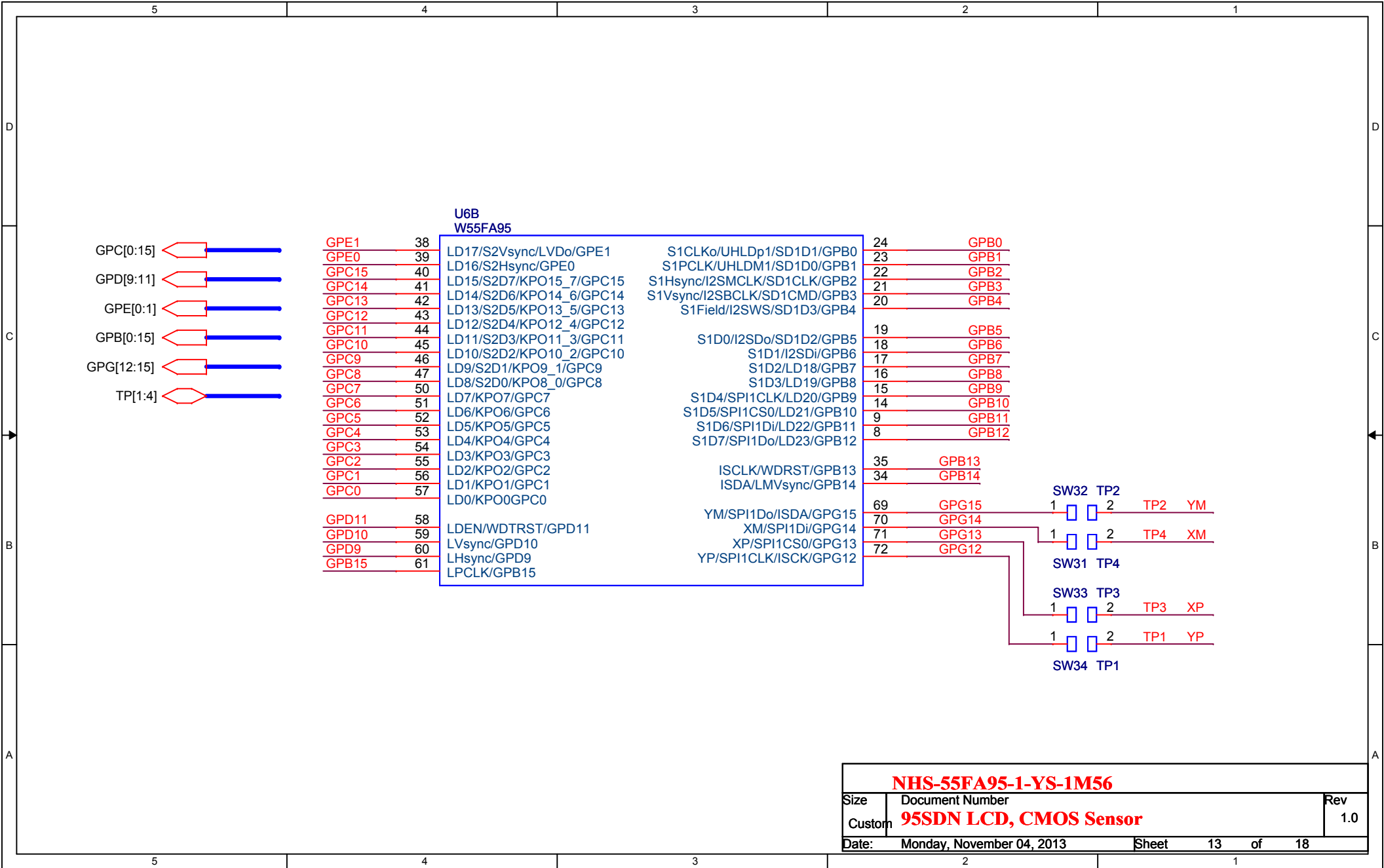


NHS-55FA95-1-YS-1M56

Size	Document Number	Rev
Custom	Keys n G-sensor	1.0
Date:	Monday, November 04, 2013	Sheet 10 of 18

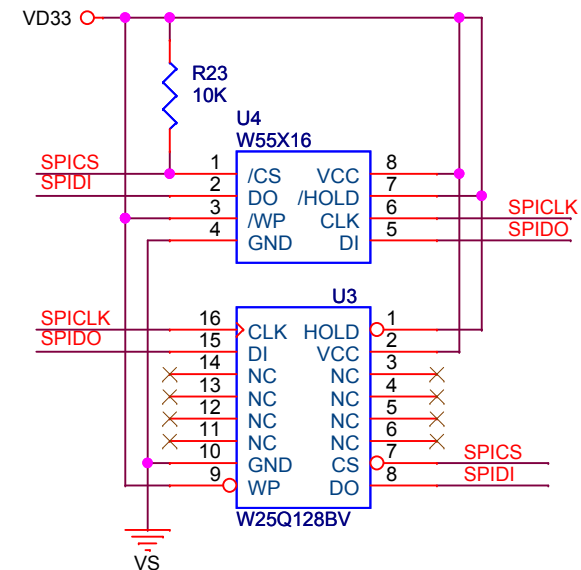
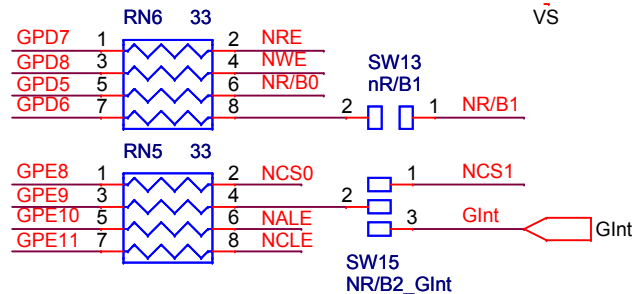
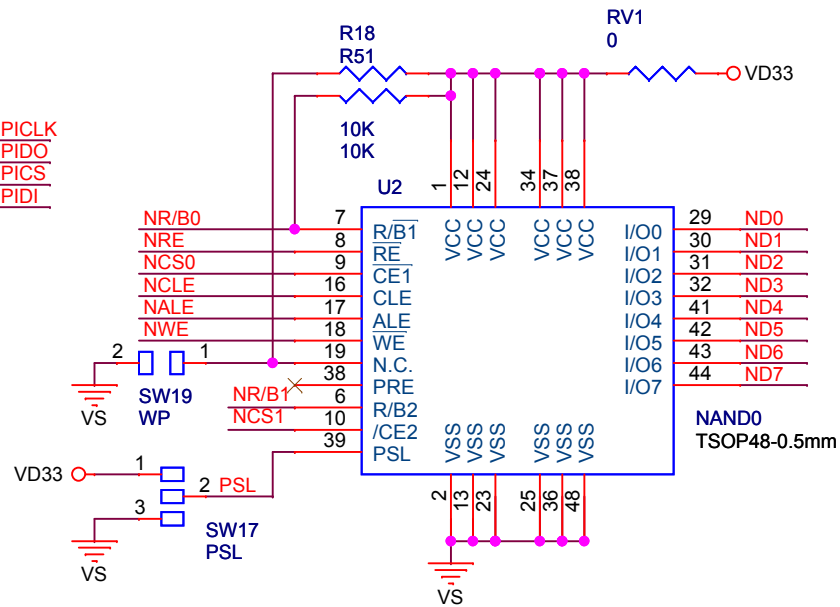
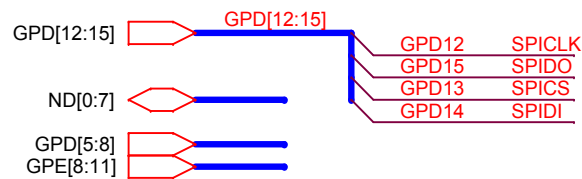
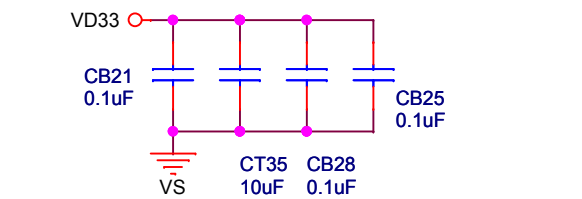






NHS-55FA95-1-YS-1M56

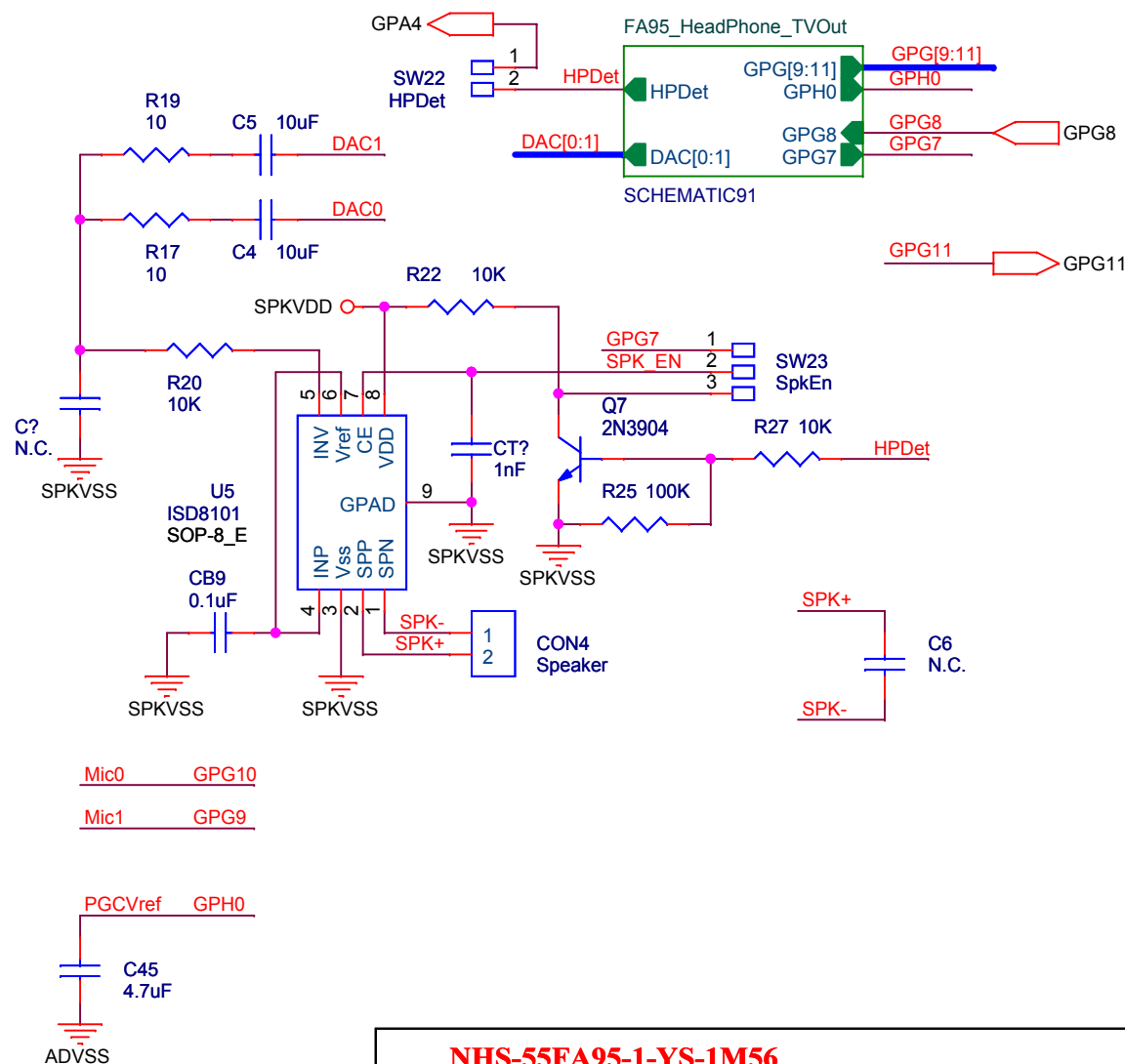
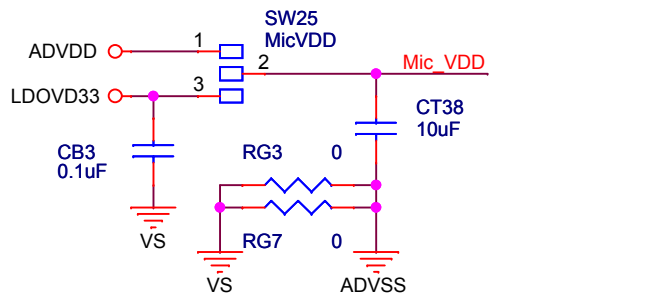
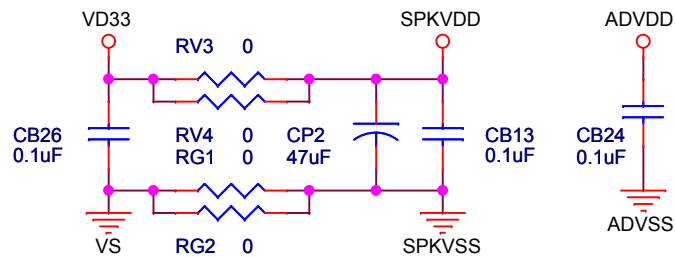
Size	Document Number	Rev
Custom	95SDN LCD, CMOS Sensor	1.0
Date:	Monday, November 04, 2013	Sheet 13 of 18



Note:
Only one SPI Flash is used.

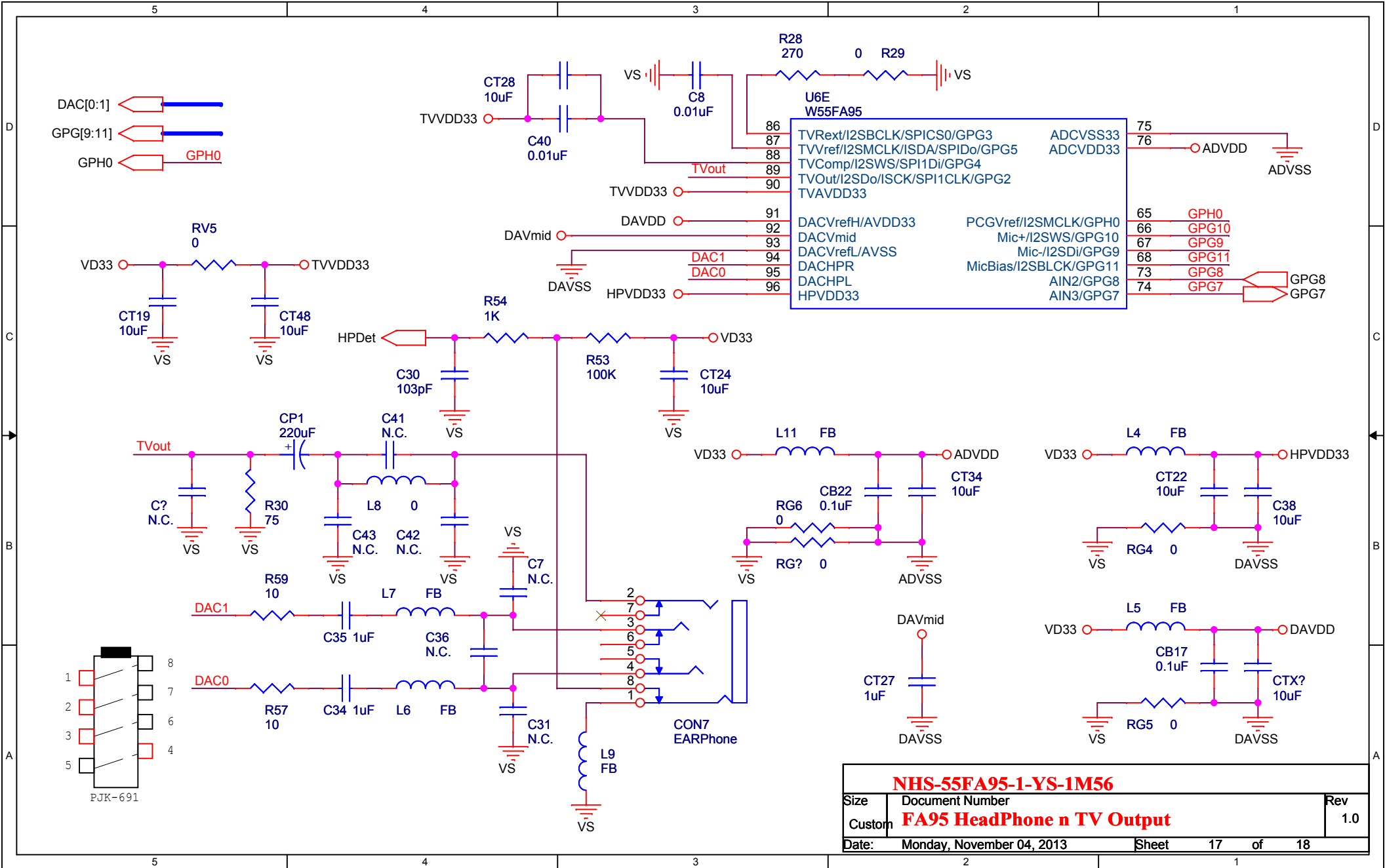
NHS-55FA95-1-YS-1M56

Size	Document Number	Rev
Custom	NAND, SPI	1.0
Date:	Monday, November 04, 2013	Sheet 14 of 18



NHS-55FA95-1-YS-1M56

Size	Document Number	Rev
Custom	Audio, Amp n TVout	1.0
Date:	Monday, November 04, 2013	Sheet 15 of 18



NHS-55FA95-1-YS-1M56		
Size	Document Number	Rev
Custom	FA95 HeadPhone n TV Output	1.0
Date:	Monday, November 04, 2013	Sheet 17 of 18

